

الشركة الفنية لأنظمة المياه والكهرباء
WATER & ELECTRICITY TECHNICAL CO.



COMPANY PROFILE

الشركة الفنية لأنظمة المياه والكهرباء
WATER & ELECTRICITY TECHNICAL CO.



INTRODUCTION

With the precise of experiences which was obtained from more than thirty-three years of experience with working in the field of water, sewage and fire pump systems, control panels and distribution panels at Al Suhaimi Pump Systems Company, one of Al Suhaimi Group Holding companies in the Kingdom of Saudi Arabia,

Which is a major distributor and agent for major pump companies in the world and one of the approved vendors in Saudi Aramco - Saudi Electricity Company - Ministry of Environment, Water and Agriculture - Royal Commission for Jubail and Yanbu - Ministry of Health and Ministry of Housing, directly or through major contracting companies (Al-Yamama, Al-Sayegh, CWC, AES, SSEM, Veolia, BEMCO, Al Mana Hospital, ... etc.,

We have learned all ins and outs for more than 33 years of experience in Pumps and Controls field. I got through the career till reach Pump Division Manager for more than 23 years.

Recently, we did start with working in the same field in Egypt and are sure to continue with more expertise so as to add more than what the public is expected.

**Water & Electricity Technical Co.,
New Cairo – Al Lotus – Office no 311,
Plot no111, East Hill Building, EGYPT**

E-ail: - nawitou@nwestc.com – Web: - www.nwestc.com



CAPABILITIES & OPERATION

Our In-house functions concentrate on the core activities of Design and Manufacture of all types of Control Panel as per Customer needs for Pumps.

- ❖ VFD Control Panel,
- ❖ Soft- Starter Control Panel,
- ❖ Booster Pump Control Panel,
- ❖ Submersible Pump Control Panel
- ❖ Other Custom-Built Control Panels as per Customer Requirement.
- ❖ Distribution Panels

In addition, we also offer Value added service like Fabrication & Assembling End Suction Centrifugal Pumps/Spit Case Pumps and Multistage Booster Pumps Skids, the company is able to maximize manufacturing flexibility and maintain keen component cost prices.

Quality Assurance

Maintenance of our high standards of quality and attention to all enquiries are of paramount importance in the growth and development of the company. **Water and Electricity Technical Co.** is considered by its clients to be amongst the one of the vendors in its range of products. This is because of its: -

- ❖ Ability to supply Pumps of Exotic metallurgies, including superior Nickel Alloys/Titanium.
- ❖ Ability to supply almost all types of Pumps
- ❖ Ability to supply API 610 Pumps.
- ❖ Ability to meet client's stringent quality requirements, including Control Systems.
- ❖ Ability to Supply UL/FM Listed Fire-Fighting Pumps.
- ❖ Submersible Pump Installation, commissioning, & Pull-Out with Expert Technicians.
- ❖ Excellent track record of our products with world renowned reputed Pump Manufacturers



PRODUCTS DETAILS AND BRANDS WE CAN SUPPLY

Sl#	Pump Type	Mfg.Std
01	End Suction Centrifugal Water Pump	EN-733/ISO2858/ ISO-5199 or ANSI-73.1
02	Vertical Inline Hot Water Circulation	Manufacturer Standards
03	Vertical Inline Pump – Single Stage	ANSI-72.3 or Manufacturer Standards
04	Vertical Inline Pump – Multistage	Manufacturer Standards
05	Submersible Well Water Pump	Manufacturer Standards
06	Submersible Sewage Pump	Manufacturer Standards
07	Vertical Turbine Pump	Manufacturer Standards
08	Multistage or single stage Booster Pumps	Original Manufacturer Assembled or Locally
09	Horizontal Split Case Pump	Manufacturer Standards
10	Fire Pump – Electric/Diesel/Jockey	UL/FM Approved or Locally Assembled
11	Control Panels & Distribution panels	VFD, Soft Start, Star/Delta, DOL..... Etc.

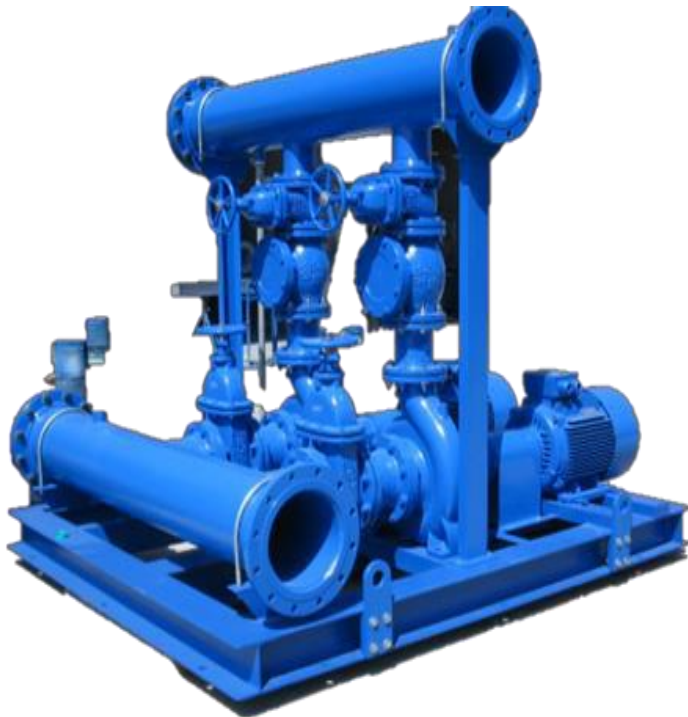




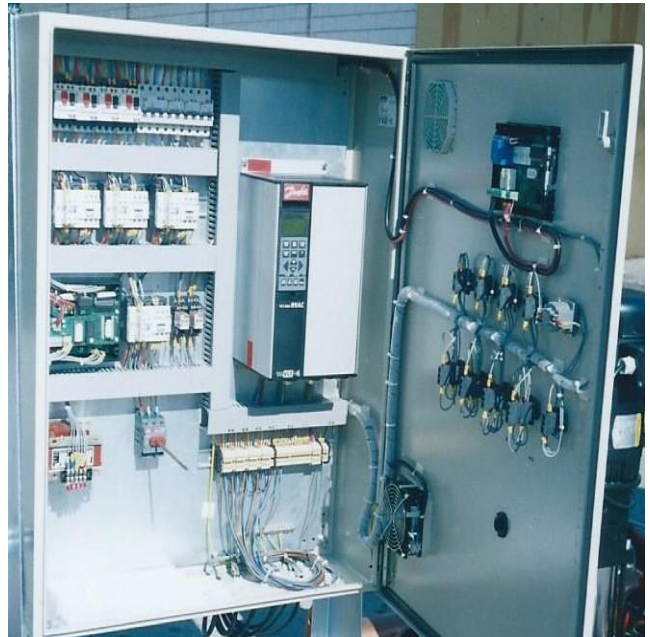
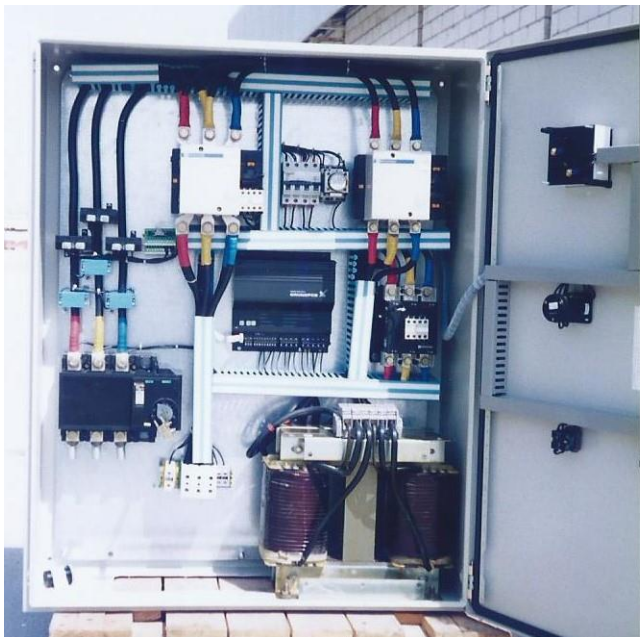
PUMP PHOTO GALLERY

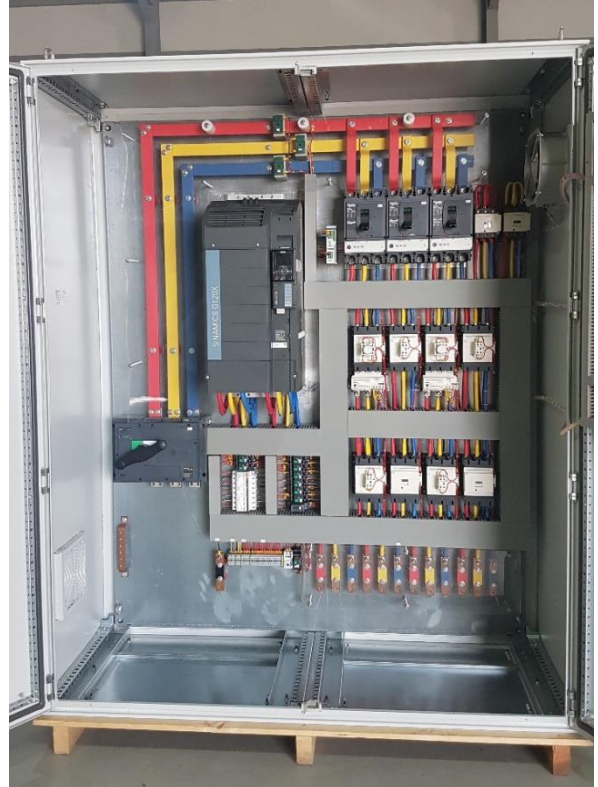
FABRICATED PUMPS & CONTROL PANEL

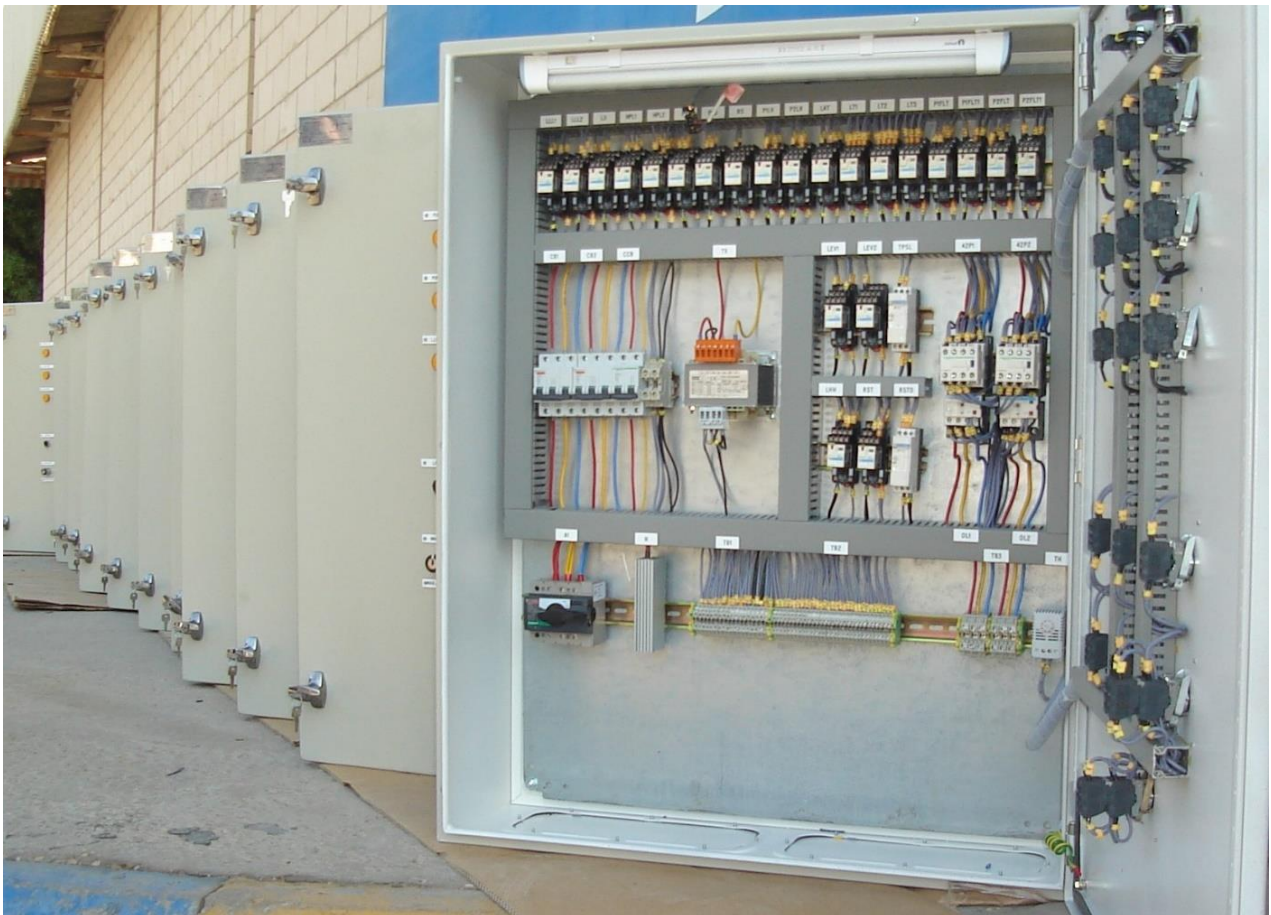
الشركة الفنية لأنظمة المياه والكهرباء
WATER & ELECTRICITY TECHNICAL CO.





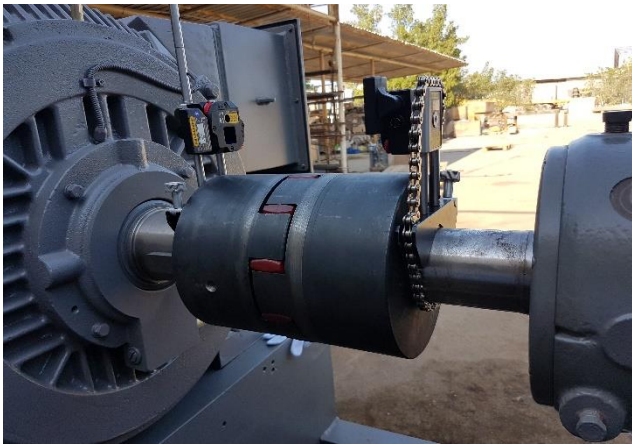


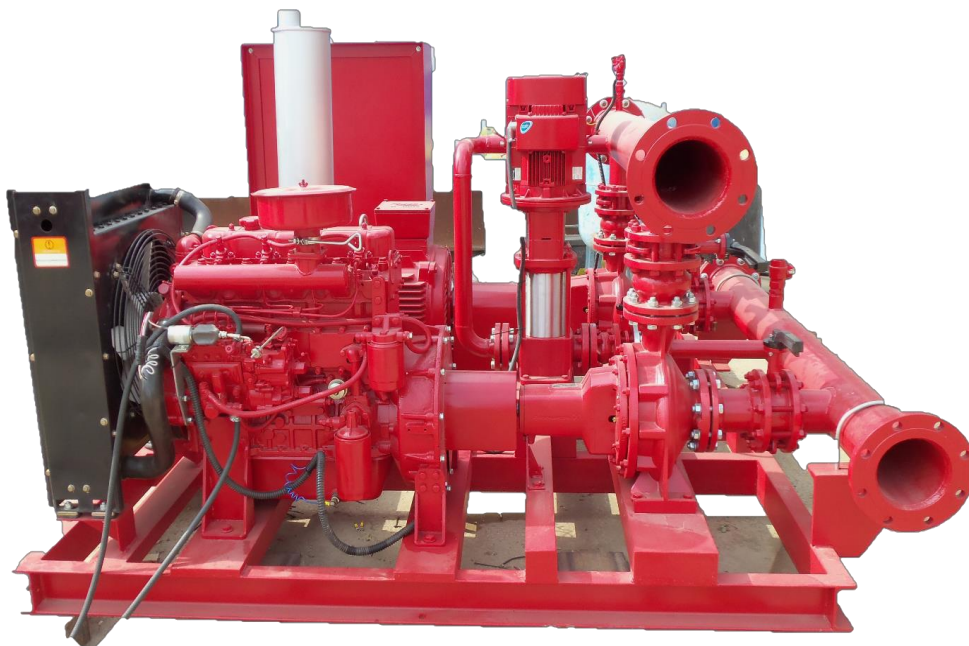
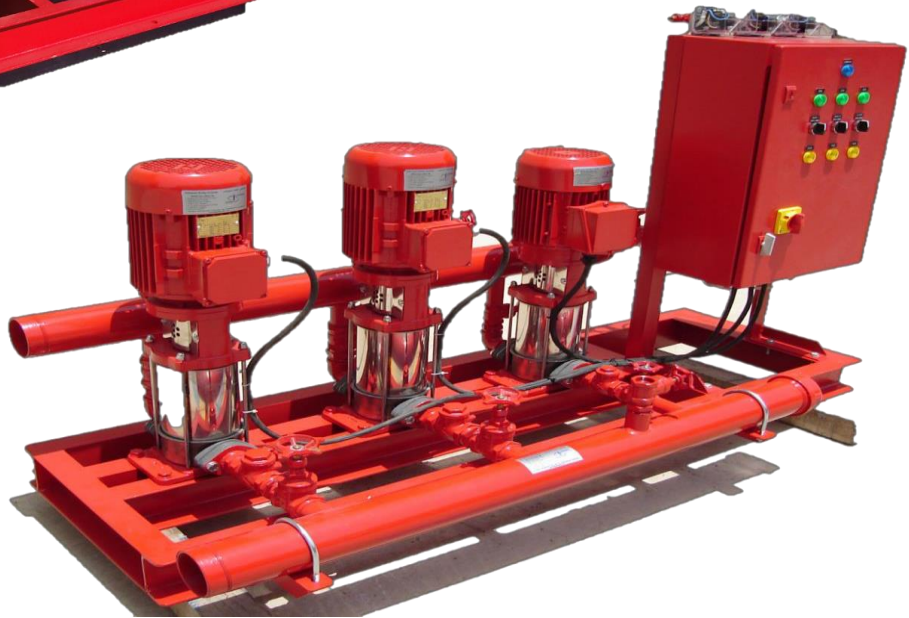




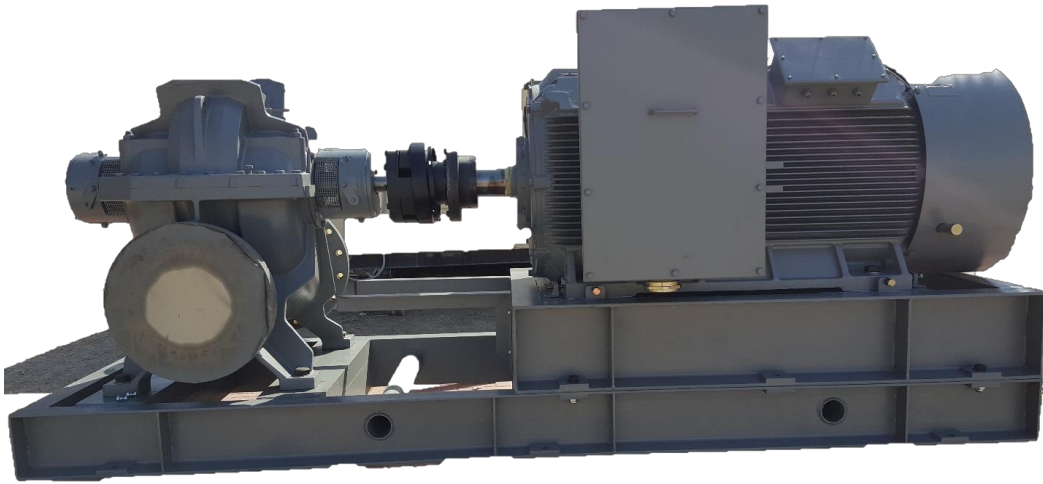


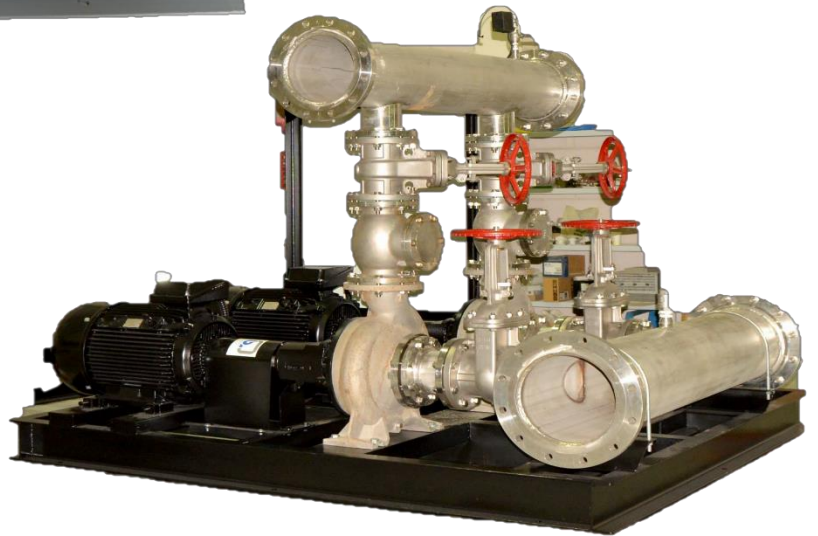
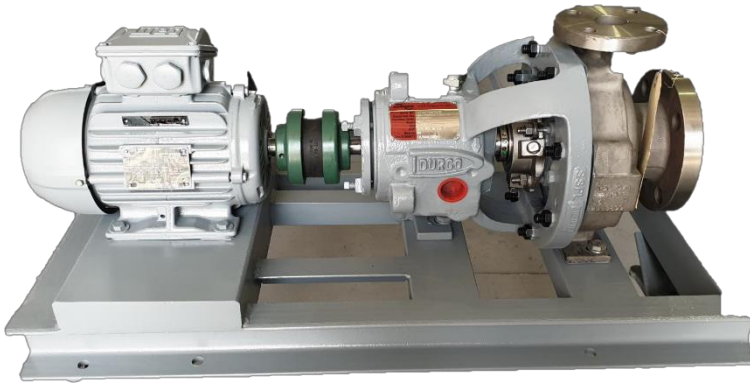




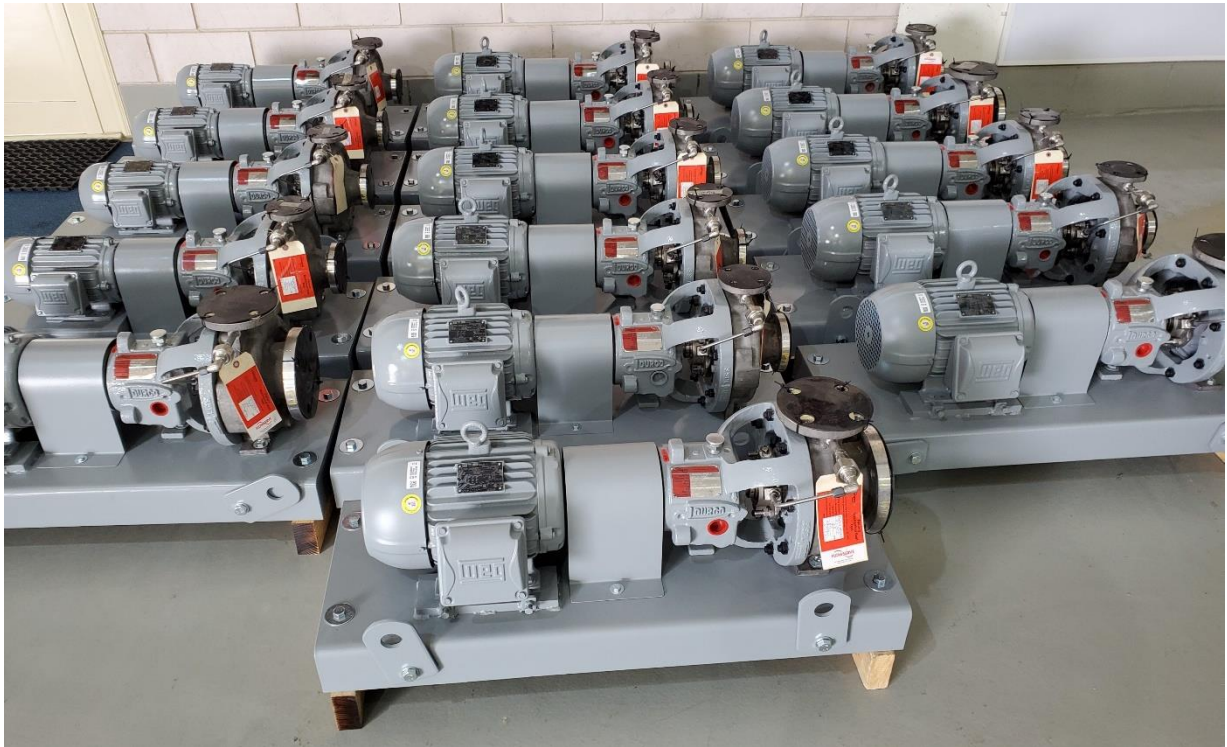














REPAIR & SERVICE PHOTOS







